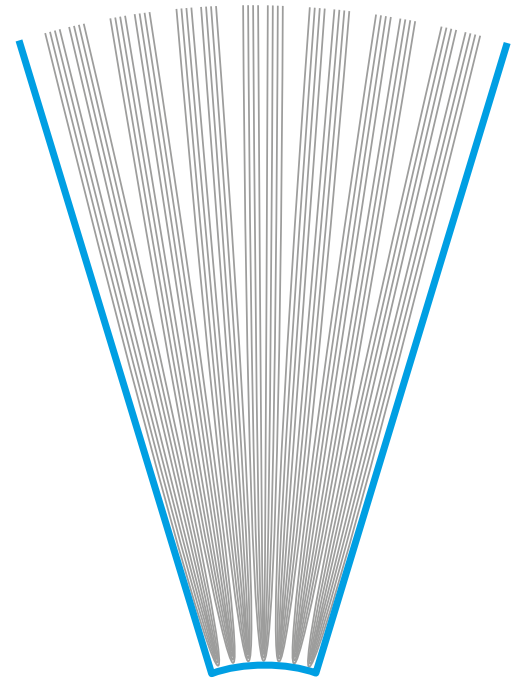


Calculation of cover

This guide will show you how to create a soft cover based on Narayana’s spine width calculation service, and provide tips for the setup.

This example of a cover report is made for a book of 360 pages in the format 138 × 220 mm. The highlighted measurements are used to create a document in the correct size.



Calculation of the spine on Soft cover	
Title:	Soft cover
Report	
Trimmed format:	138 x 220 mm (width x height)
No. of pages:	360
Imposition:	16 pages
Binding:	Thread sewn or thread sealed
Paper:	90 g Munken Pure
Result	
Book block:	21.1 mm
Spine width:	23 mm
Total width:	299 mm
Total height:	220 mm

New Document

Document Preset: [Custom]

Intent: Print

Number of Pages: 1 Facing Pages

Start Page No: 1 Primary Text Frame

Page Size: [Custom]

Width: 299 mm Orientation: [Portrait]

Height: 220 mm Binding: [Thread Sewn]

Columns

Number: 2 Gutter: 23 mm

Margins

Top: 12 mm Inside: 12 mm

Bottom: 12 mm Outside: 12 mm

Bleed and Slug

	Top	Bottom	Inside	Outside
Bleed:	5 mm	5 mm	5 mm	5 mm
Slug:	0 mm	0 mm	0 mm	0 mm

Preview Cancel OK

InDesign document

Choose File > New > Document, and fill out as shown, using the values from the actual cover calculation like this:

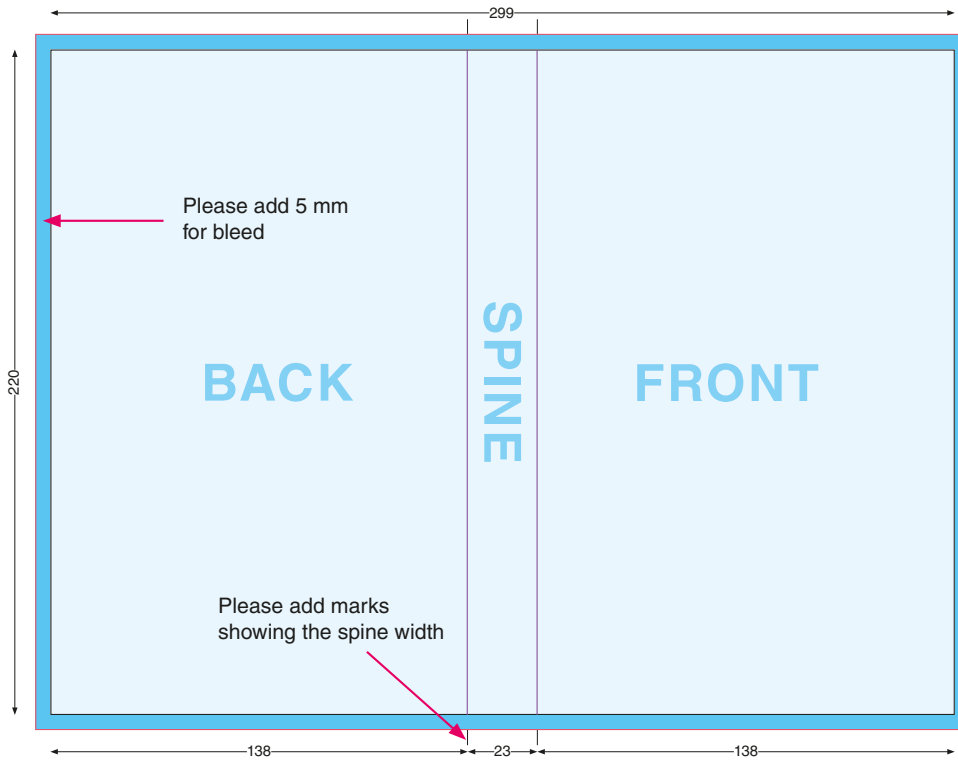
Width = Total width

Height = Total height

Gutter = Spine width

All margins can be set freely as you prefer.

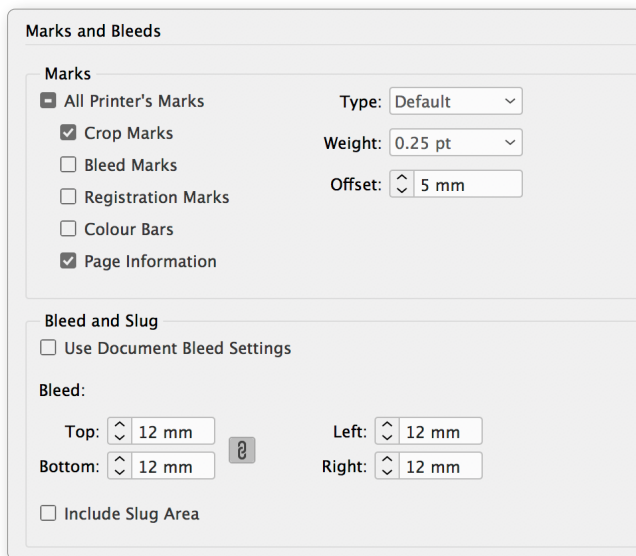
The result will be a document similar to this sketch, where the spine width corresponds to Column Gutter.



The light blue area shows the trimmed format of the book, and the darker blue area shows bleed. Please note that the motif should cover the entire area.

All cutting marks are added automatically during PDF export. Please add marks showing the spine width, preferably in Registration Color.

PDF should be exported with Crop Marks and Page Information at a distance of 5 mm, and 12 mm Bleed.



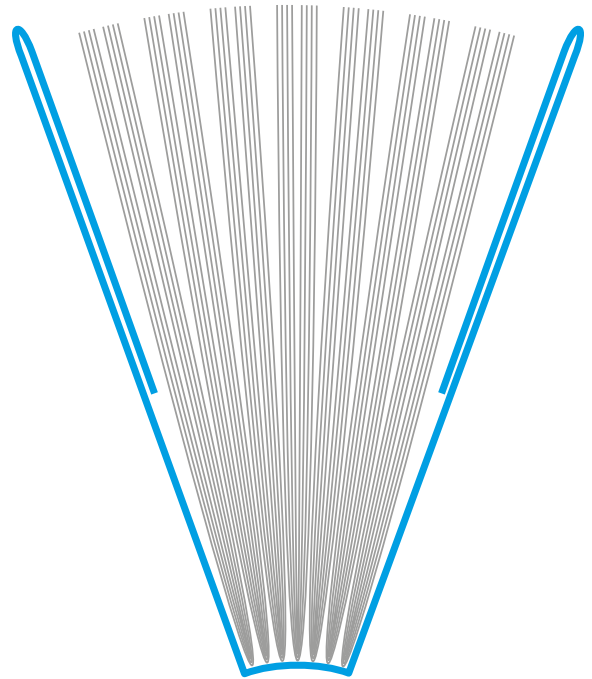
Narayana Press PDF Export Options can be downloaded [here](#).

Calculation of cover

This guide will show you how to create a soft cover with flaps based on Narayana’s spine width calculation service, and provide tips for the setup.

This example of a cover report is made for a book of 360 pages in the format 138 × 220 mm, and a foldout width of 100 mm.

The highlighted measurements are used to create a document in the correct size.



Calculation of the spine on Soft cover with flaps

Title: Soft cover with flaps

Report

Trimmed format: 138 x 220 mm (width x height)
 No. of pages: 360
 Imposition: 16 pages
 Binding: Thread sewn or thread sealed
 Paper: 90 g Munken Pure
 Foldout width: 100 mm

Result

Book block: 21.1 mm
 Spine width: 23 mm
 Total width: 504 mm
 Total height: 220 mm

New Document

Document Preset: [Custom]

Intent: Print

Number of Pages: 1 Facing Pages
 Start Page No: 1 Primary Text Frame

Page Size: [Custom]

Width: 504 mm Orientation:
 Height: 220 mm

Columns
 Number: 2 Gutter: 23 mm

Margins
 Top: 12 mm Left: 100 mm
 Bottom: 12 mm Right: 100 mm

▼ Bleed and Slug

	Top	Bottom	Left	Right
Bleed:	5 mm	5 mm	5 mm	5 mm
Slug:	0 mm	0 mm	0 mm	0 mm

Preview Cancel OK

InDesign dokument

Choose File > New > Document, and fill out as shown, using the values from the actual cover calculation like this:

Width = Total width

Height = Total height

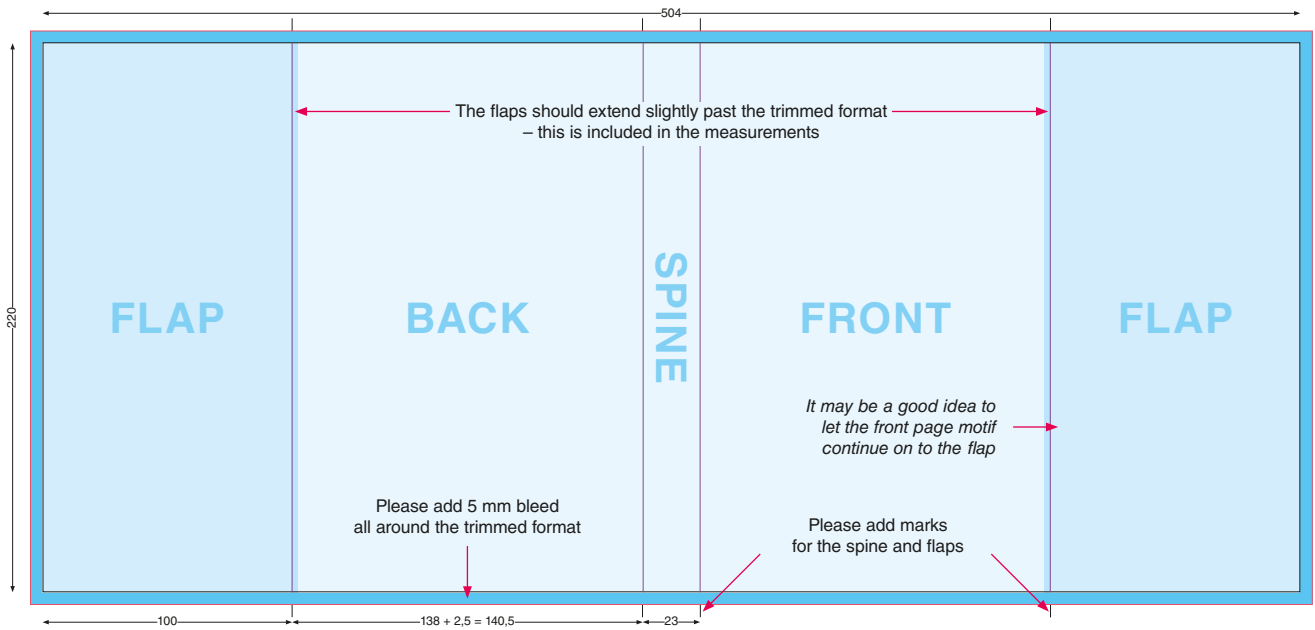
Gutter = Spine width

and

Margins Left + Right = Foldout Width

Top- and bottom margins can be set freely as you prefer.

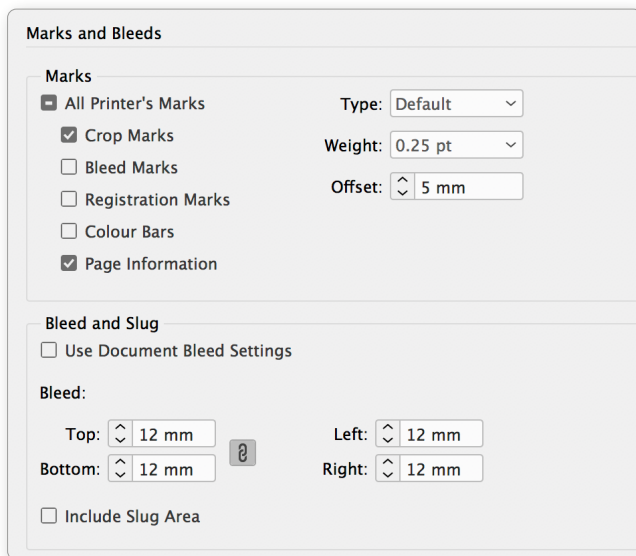
The result will be a document similar to this sketch. The spine width corresponds to Column Gutter, and the left and right margins correspond to the flaps.



The light blue area shows the trimmed format of the book, the darker blue areas show the flaps, and the darkest blue areas show the bleed. Please note that the motif should cover the entire area.

All cutting marks are added automatically during PDF export. Please add marks showing the spine and flap widths, preferably in Registration Color.

PDF should be exported with Crop Marks and Page Information at a distance of 5 mm, and 12 mm Bleed.

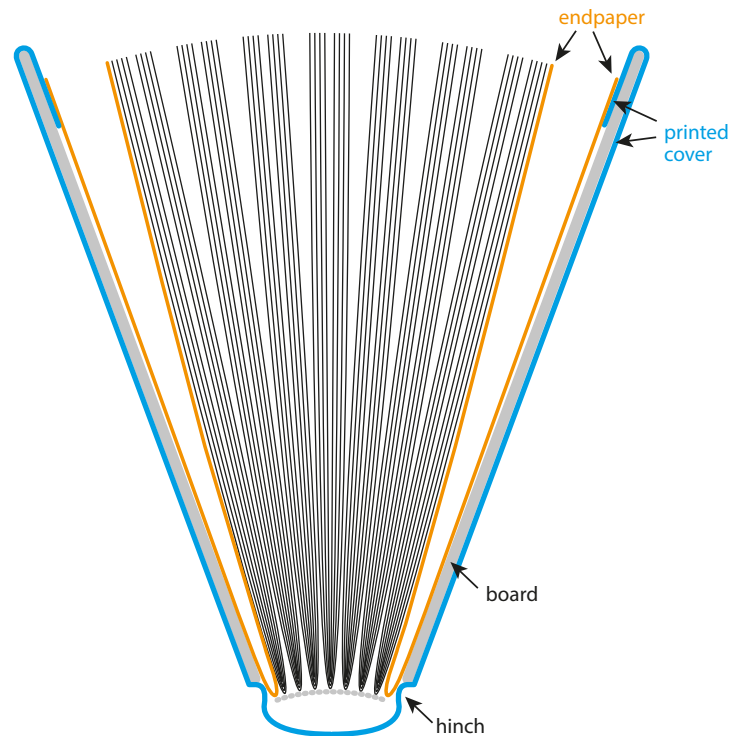


Narayana Press PDF Export Options can be downloaded [here](#).

Calculation of cover

This guide will show you how to create a printed paper case cover based on Narayana’s spine width calculation service, and provide tips for the setup.

This example of a cover report is made for a book of 360 pages in the format 138 × 220 mm. The highlighted measurements are used to create a document in the correct size.



Calculation of the spine on Printed paper case cover

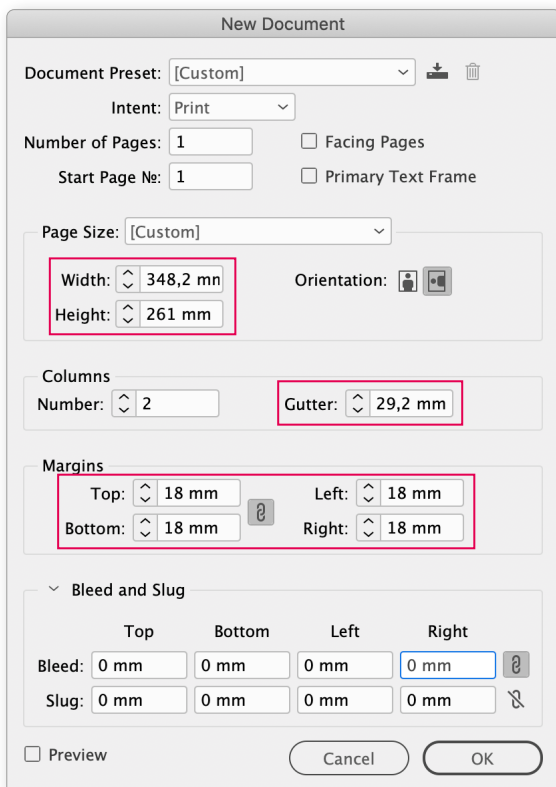
Title: Printed paper case cover

Report

Trimmed format: 138 x 220 mm (width x height)
 No. of pages: 360
 Imposition: 16 pages
 Binding: Thread sewn or thread sealed
 Paper: 90 g Munken Pure
 Spine design: Round spine
 Thickness of board : 2.5 mm

Result

Book block: 21.1 mm
 Spine width: 29.2 mm
 Total width: 348.2 mm
 Total height: 261 mm



InDesign dokument

Choose File > New > Document, and fill out as shown, using the values from the actual cover calculation like this:

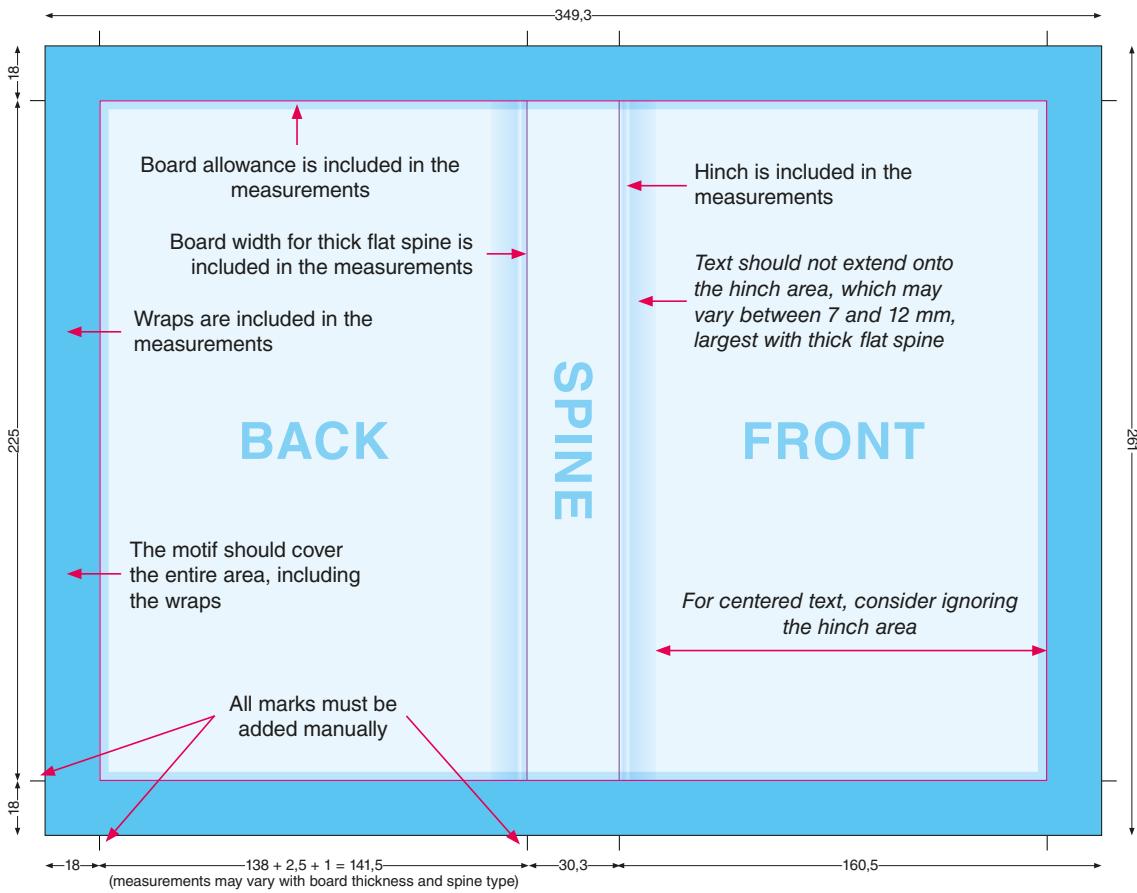
- Width = Total width
- Height = Total height
- Gutter = Spine width

Please note that in this type of cover, the wraps are included in the measurements.

Therefore, all margins must be defined as stated in the report (c = wraps, usually 18 mm), corresponding to the parts which are wrapped around the board.

Bleed is set to 0.

The result will be a document similar to this sketch. The spine width corresponds to Column Gutter, and Margins correspond to the wraps.

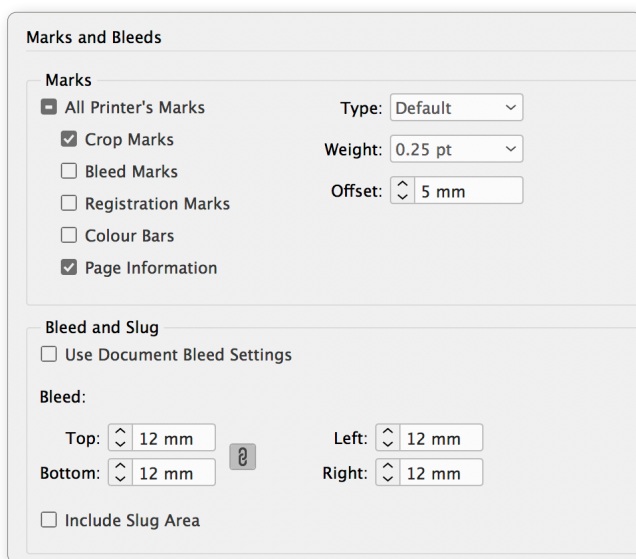


The light blue areas show the trimmed format of the book, the darker blue areas show the board allowances, and the darkest blue areas show the wraps.

Please note that the motif must cover the entire surface, including the bleed area.

On this cover type, please add all marks manually, preferably in Registration Color.

PDF should be exported with Crop Marks and Page Information at a distance of 5 mm, and 12 mm Bleed.

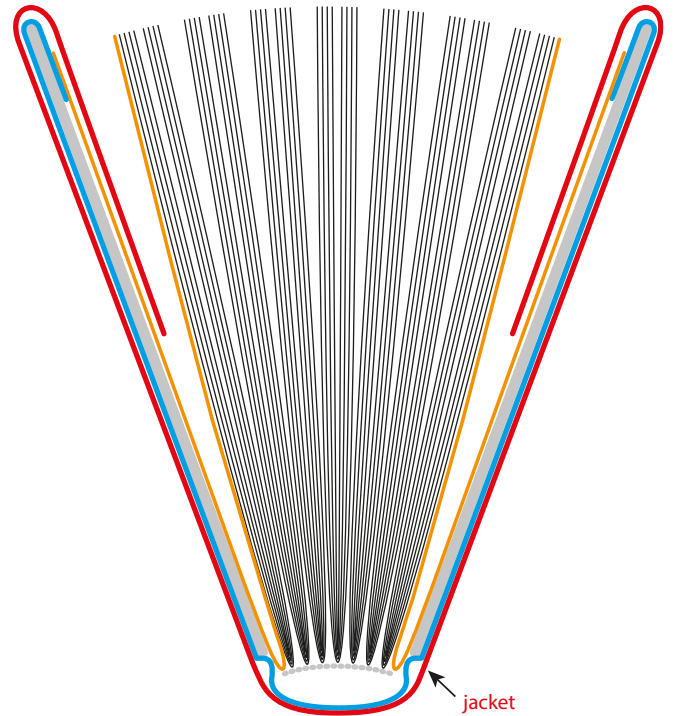


Narayana Press PDF Export Options can be downloaded [here](#).

Calculation of cover

This guide will show you how to create a jacket based on Narayana’s spine width calculation service, and provide tips for the setup.

This example of a cover report is made for a book of 360 pages in the format 138 × 220 mm, and a foldout width of 100 mm. The highlighted measurements are used to create a document of the correct size.



Calculation of the spine on Jacket	
Title:	Jacket
Report	
Trimmed format:	138 x 220 mm (width x height)
No. of pages:	360
Imposition:	16 pages
Binding:	Thread sewn or thread sealed
Paper:	90 g Munken Pure
Spine design:	Round spine
Thickness of board :	2.5 mm
Foldout width:	100 mm
Result	
Book block:	21.1 mm
Spine width:	29.2 mm
Total width:	512.2 mm
Total height:	225 mm

New Document

Document Preset: [Custom]

Intent: Print

Number of Pages: 1 Facing Pages

Start Page No: 1 Primary Text Frame

Page Size: [Custom]

Width: 512,2 mm

Height: 225 mm

Orientation: Portrait Landscape

Columns

Number: 2

Gutter: 29,2 mm

Margins

Top: 12 mm

Bottom: 12 mm

Left: 100 mm

Right: 100 mm

Bleed and Slug

	Top	Bottom	Left	Right
Bleed:	5 mm	5 mm	5 mm	5 mm
Slug:	0 mm	0 mm	0 mm	0 mm

Preview

Cancel OK

InDesign dokument

Choose File > New > Document, and fill out as shown, using the values from the actual cover calculation like this:

Width = Total width

Height = Total height

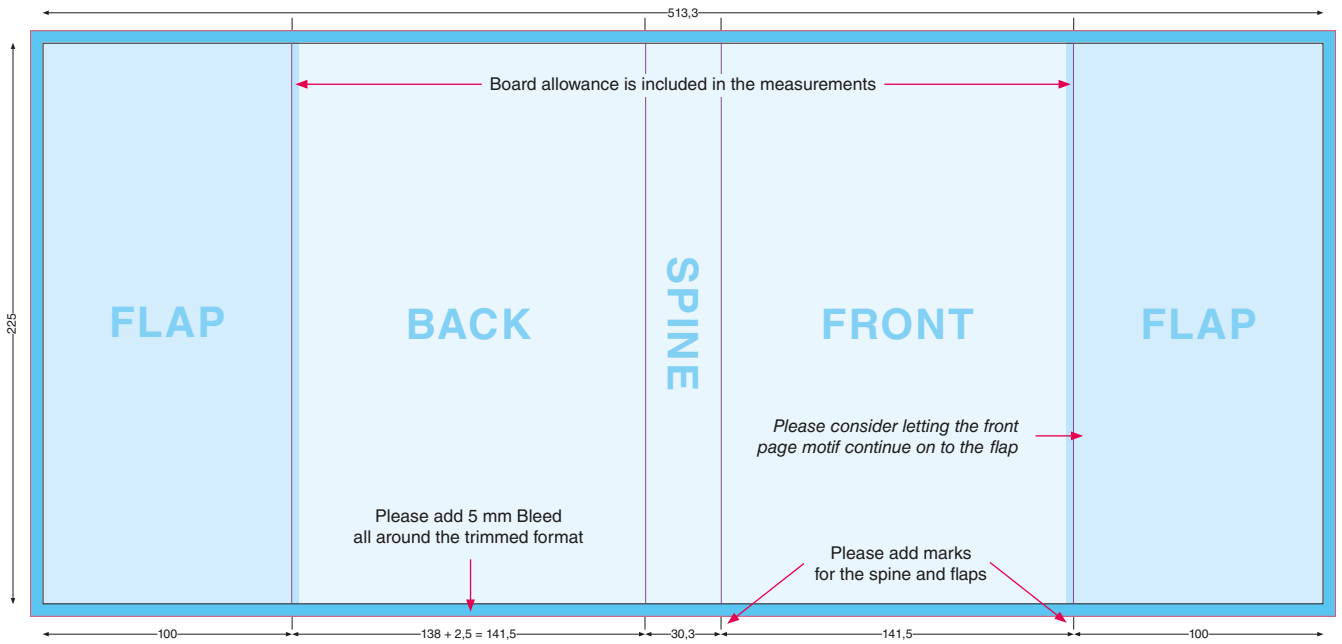
Gutter = Spine width

and

Margins Left + Right = foldout width

Top- and bottom margins can be set freely as you prefer.

The result will be a document similar to this sketch. The spine width corresponds to Column Gutter, and the left and right margins correspond to the flaps.



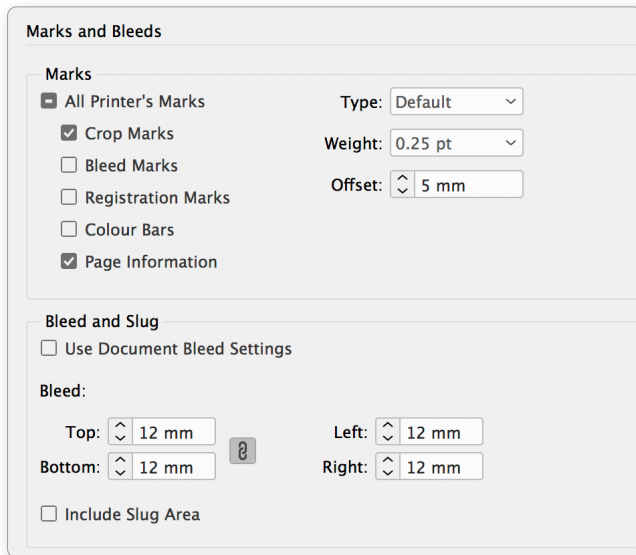
The light blue area shows the trimmed format of the book, the darker blue areas show the flaps, and the darkest blue areas show the bleed.

Please note that the motif must cover the entire area.

All cutting marks are added automatically during PDF export.

Please add marks showing the spine and flap widths, preferably in Registration Color.

PDF should be exported with Crop Marks and Page Information at a distance of 5 mm, and 12 mm Bleed.

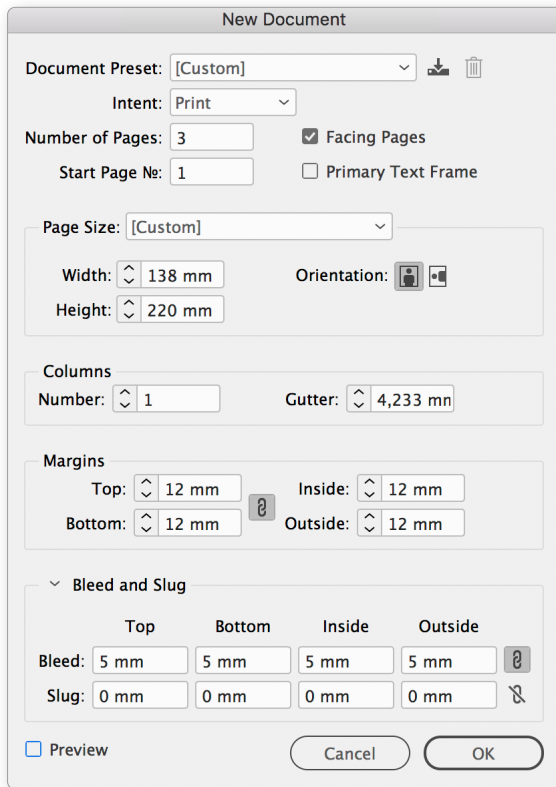


Narayana Press PDF Export Options can be downloaded [here](#).

Setting up covers with flexible widths

This guide will show you how to create covers using several pages instead of one, making it easy to change the spine and flap widths without affecting the front and back.

Choose File > New > Document, and fill out like this:



The number of pages should be 3 (or 5 in case of flaps), and Facing Pages should be turned on.

Width and Height should correspond to the trimmed format of the book, including allowance for hinch and board, if any.

The values can be seen in the report, under Abbreviations:

Abbreviations
 a = hinch (1 mm)
 b = board allowance (2.5 mm)
 c = wraps (18 mm)

For soft covers with flaps, you will need to add about 2 mm to the document width.

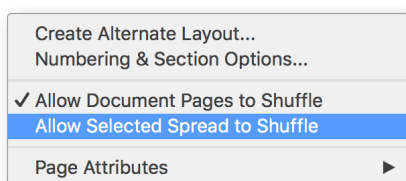
For printed paper case covers, you will need to add about 3,5 mm to the document width, and 5 mm to the document height, depending on board thickness and spine type.

Top- and bottom margins can be set freely as you prefer.

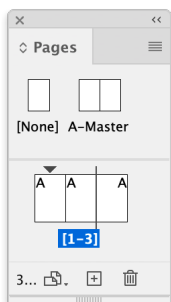
For covers without wraps, use 5 mm Bleed.

For printed paper case covers, set Bleed to the same size as the wraps, about 18 mm.


Open the Pages panel, select all pages, and deactivate Allow Selected Spread to Shuffle.

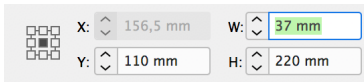


Drag the first page to the right, until it joins page 2.
 For soft covers with flaps, all five pages should be joined.

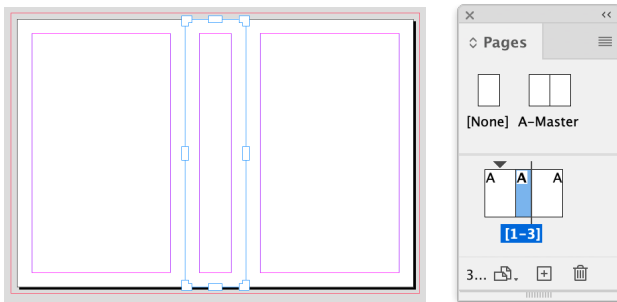


– alternative method with flexible spine and flap widths

Make sure that the Reference Point is in the middle. Select page 2, which will be the spine, using the Page Tool . Insert the spine width:

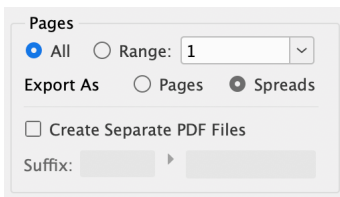


The result will look like this:

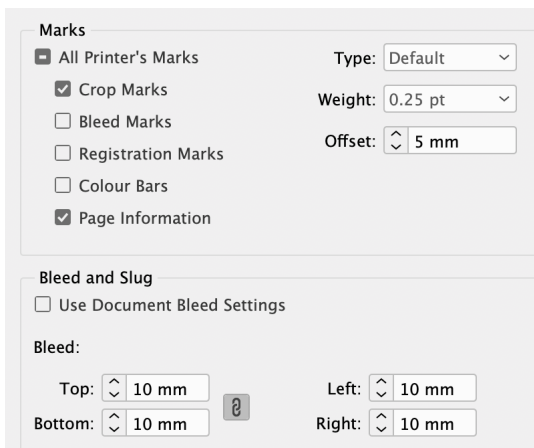


Use the same method to change the widths of the flaps, if any.

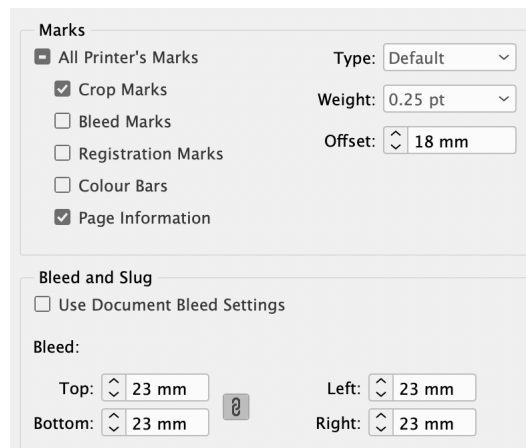
PDF must be exported as *Spreads*. All marks will be generated automatically.



All covers without wraps are exported with Crop Marks and Page Information, Offset 5 mm and Bleed 10 mm.



Printed paper case covers are exported with Crop Marks and Page Information, Offset 18 mm and Bleed 23 mm.



TIP

If you need a JPG or PDF of the cropped front page, just export this one page, without *Bleed*.