

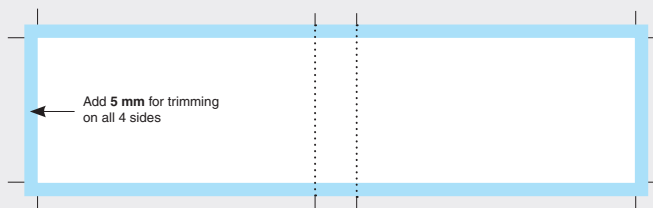
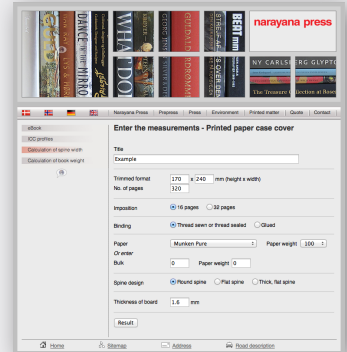
Document setup using Narayana's calculations

This guide will show you how to use the calculations from the spine width calculation service on Narayana's website to set up cover documents with exact measurements and guides for various kinds of book covers.

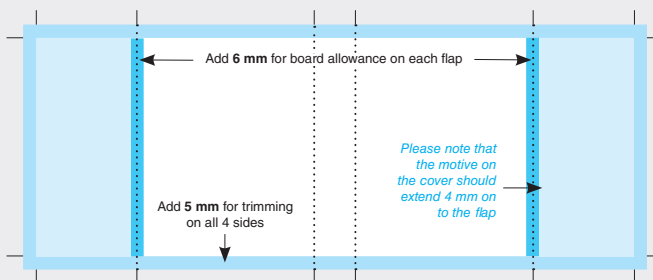
The technical terms and the screenshots are from InDesign, but the principles apply to all page layout programmes.

Below you will find short descriptions and drawings showing how different types of covers are constructed. The white areas correspond to the trimmed format of the book, light blue areas show board allowance, and dark blue areas show hinch and wraps. Layout hints in blue text.

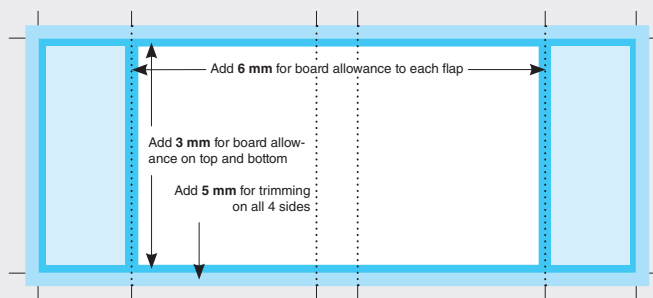
The following pages show in more detail how these four kinds of covers are constructed, with examples of document setup.



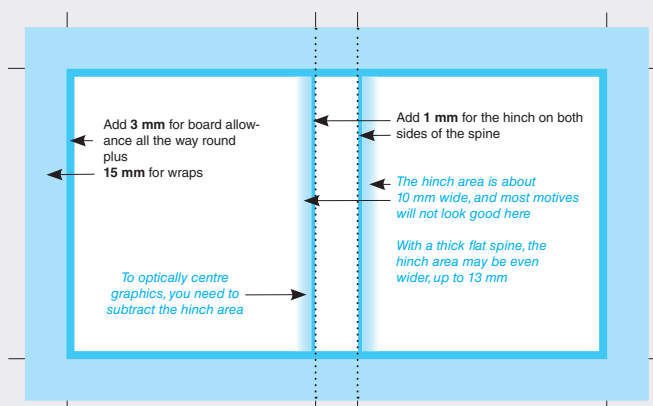
Soft covers should be defined with *Document Setup* matching the total width and height from the calculation, and with 5 mm *Bleed*, 2 *Columns*, and *Gutter* matching the spine width given. Marks in *Registration* color showing spine width must be added manually. *Crop Marks* will be added automatically when the PDF is exported with 10 mm *Bleed* and *Crop Marks* and *Page Information* at 5 mm's distance.



Soft cover with flaps should be defined with *Document Setup* matching the total width and height from the calculation, 5 mm *Bleed*, and 2 *Columns*. Right and left margins should match the width you want the flaps to be, and *Gutter* should match the spine width given. Marks in *Registration* color showing spine and flap width must be added manually. *Crop Marks* will be added automatically when the PDF is exported with 10 mm *Bleed* and *Crop Marks* and *Page Information* at 5 mm's distance.



Jackets should be defined with *Document Setup* matching the total width and height from the calculation, 5 mm *Bleed*, and 2 *Columns*. Right and left margins should match the width you want the flaps to be, and *Gutter* should match the spine width given. Marks in *Registration* color showing spine and flap width must be added manually. *Crop Marks* will be added automatically when the PDF is exported with 10 mm *Bleed* and *Crop Marks* and *Page Information* at 5 mm's distance.



Printed paper case covers should be defined with *Document Setup* matching the total width and height from the calculation, no bleed, and 2 columns. Margins should be 15 mm, and *Gutter* should match the spine width given. The visible part of the cover corresponds to what you see inside the margin guides. Marks in registration color showing spine width and cropping must be added by hand. PDF for printing should be exported with 5 mm *Bleed* and a *Page Information* distance of 3 mm.

Soft cover

Example

narayana press

Calculation of the spine on Soft cover

Title:Example

Report

Trimmed format:170 x 240 mm (height x width)

No. of pages:320

Binding:Thread sewn or thread sealed

Paper:100 g Munken Pure

Result

Book block:18.1 mm

Spine width:20.4 mm

Total width:360.4 mm

Total height:240 mm

d

f

e

Return

Print

Abbreviations

a = hinch (1 mm)

b = board allowance (3 mm)

c = wraps (15 mm)

d = spine width

e = width

f = height

g = flap

Remember 5 mm extra for trimming on all 4 sides.

The measurements given in this calculation are only approximate and may vary according to the actual binding.

Narayana Press is not liable for possible errors in this calculation program.

--- 170 mm ---

23.8

--- 170 mm ---

Margins and Columns

Margins

Top:0 mm

Left:0 mm

Bottom:0 mm

Right:0 mm

Columns

Number:2

Gutter:23.8 mm

Enable Layout Adjustment

OK

Cancel

Preview

Document Setup

Intent:Print

Number of Pages:1

Start Page Nr:1

Page Size:[Custom]

Width:363.8 mm

Height:240 mm

Orientation:

Bleed and Slug

Top

Bottom

Left

Right

Bleed:5 mm5 mm5 mm5 mm

Slug:0 mm0 mm0 mm0 mm

Preview

Cancel

OK

Updated September 2014

Book Cover

Page 2 of 5

Soft cover with flaps

Example

narayana press

✕

Calculation of the spine on Soft cover with flaps

Title:Example

Report

Trimmed format:170 x 240 mm (height x width)

No. of pages:320

Binding:Thread sewn or thread sealed

Paper:100 g Munken Pure

Foldout width:120 mm

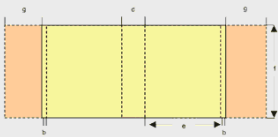
Result

Book block:18.1 mm

Spine width:20.4 mm

Total width:606.4 mm

Total height:240 mm



Return

Print

Abbreviations

a = hinch (1 mm)

b = board allowance (3 mm)

c = wraps (15 mm)

d = spine width

e = width

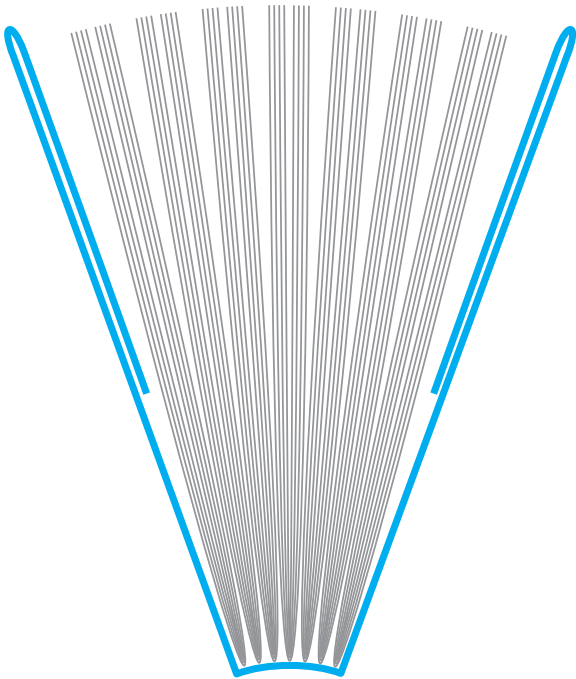
f = height

g = flap

Remember 5 mm extra for trimming on all 4 sides.

The measurements given in this calculation are only approximate and may vary according to the actual binding.

Narayana Press is not liable for possible errors in this calculation program.



--- 120 mm ---

--- 170 mm + 3 mm ---

23.8

--- 170 mm + 3 mm ---

--- 120 mm ---

Margins and Columns

OK

Cancel

Preview

Enable Layout Adjustment

Document Setup

Intent: Print

Number of Pages: 1

Start Page No: 1

Facing Pages

Primary Text Frame

Page Size: Custom

Width: 609.8 mm

Height: 240 mm

Orientation: Portrait

Bleed and Slug

Top

Bottom

Inside

Outside

Bleed: 5 mm 5 mm 5 mm 5 mm

Slug: 0 mm 0 mm 0 mm 0 mm

Preview

Cancel

OK

--- 609.8 mm X 240 mm ---

Printed paper case cover

Example

narayana press

narayana press

Calculation of the spine on Printed paper case cover

Title:Example

Report

Trimmed format:170 x 240 mm (height x width)

No. of pages:320

Binding:Thread sewn or thread sealed

Paper:100 g Munken Pure

Spine design:Round spine

Thickness of board :1.6 mm

Result

Book block:18.1 mm

Spine width:23.8 mm

Total width:401.8 mm

Total height:276 mm

The diagram shows a rectangular layout for a book cover. It is divided into sections labeled with letters: 'c' for the top and bottom flaps, 'd' for the spine area, 'b' for the side flaps, 'f' for the main body height, 'e' for the spine width, and 'a' for the board allowance. The layout is shown in a perspective view.

Return

Print

Abbreviations

a = hinch (1 mm)

b = board allowance (3 mm)

c = wraps (15 mm)

d = spine width

e = width

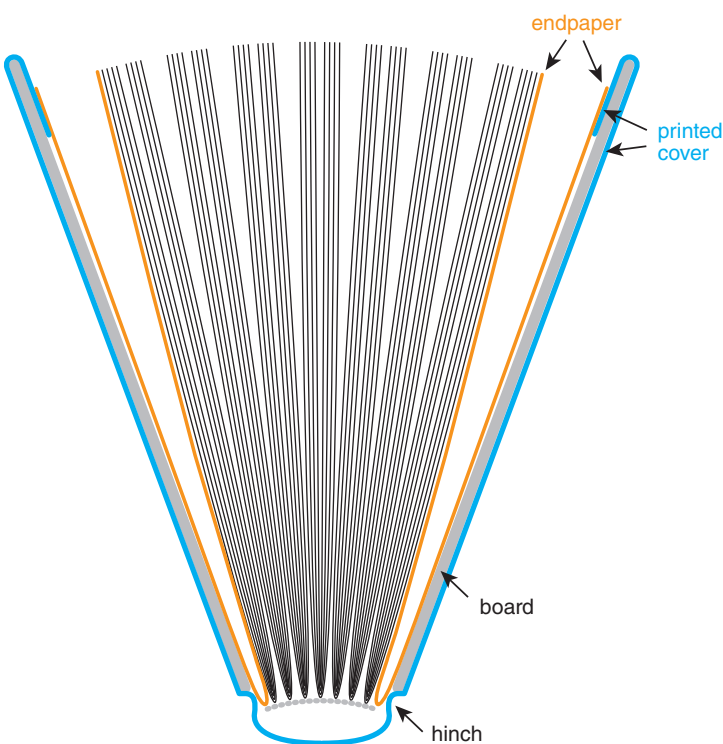
f = height

g = flap

Remember 5 mm extra for trimming on all 4 sides.

The measurements given in this calculation are only approximate and may vary according to the actual binding.

Narayana Press is not liable for possible errors in this calculation program.



--- 170 mm + 3 mm + 1 mm nedbræending ---

23.8

--- 174 mm ---

Margins and Columns

Margins

Top:15 mm

Bottom:15 mm

Inside:15 mm

Outside:15 mm

OK

Cancel

Preview

Columns

Number:2

Gutter:23.8 mm

☐ Enable Layout Adjustment

Document Setup

Intent:Print

Number of Pages:1

Start Page No:1

Page Size:[Custom]

Width:401.8 mm

Height:276 mm

Orientation:Portrait

Bleed and Slug

Top

Bleed:0 mm

Bottom

Bleed:0 mm

Inside

Bleed:0 mm

Outside

Bleed:0 mm

Slug:0 mm

0 mm

0 mm

0 mm

0 mm

Preview

Cancel

OK

--- 401.8 mm X 276 mm ---

Jacket

Example

narayana press

Calculation of the spine on Jacket

Title:Example

Report

Trimmed format:170 x 240 mm (height x width)

No. of pages:320

Binding:Thread sewn or thread sealed

Paper:100 g Munken Pure

Spine design:Round spine

Thickness of board :1.6 mm

Foldout width:120 mm

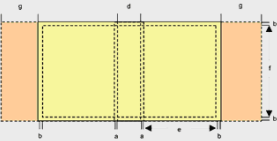
Result

Book block:18.1 mm

Spine width:23.8 mm

Total width:611.8 mm

Total height:246 mm



Return

Print

Abbreviations

a = hinch (1 mm)

b = board allowance (3 mm)

c = wraps (15 mm)

d = spine width

e = width

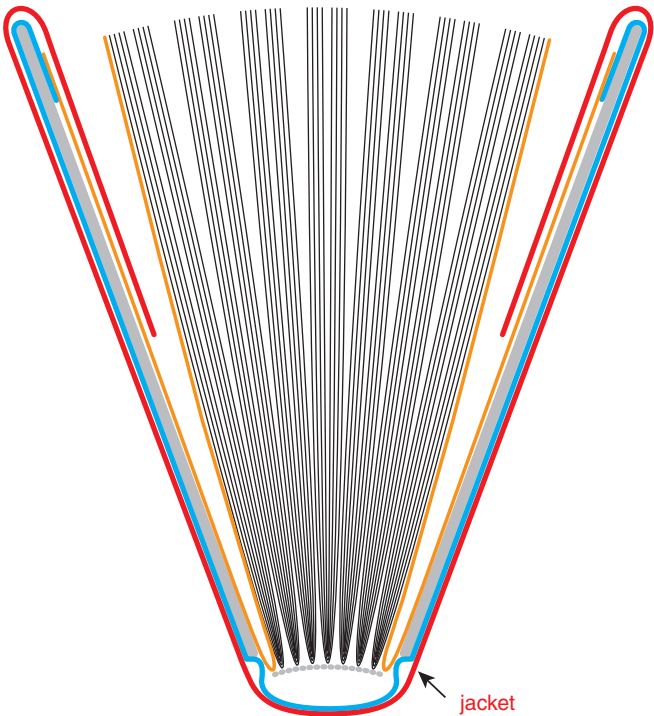
f = height

g = flap

Remember 5 mm extra for trimming on all 4 sides.

The measurements given in this calculation are only approximate and may vary according to the actual binding.

Narayana Press is not liable for possible errors in this calculation program.



120 mm

170 mm + 4 mm

23.8

170 mm + 4 mm

120 mm

Margins and Columns

Margins

Top:0 mm

Bottom:0 mm

Inside:120 mm

Outside:120 mm

Columns

Number:2

Gutter:23.8 mm

Enable Layout Adjustment

Document Setup

Intent:Print

Number of Pages:8

Start Page No:1

Page Size:Custom

Width:611.8 mm

Height:246 mm

Bleed and Slug

Top

Bottom

Inside

Outside

Bleed:5 mm

5 mm

5 mm

5 mm

Slug:0 mm

0 mm

0 mm

0 mm